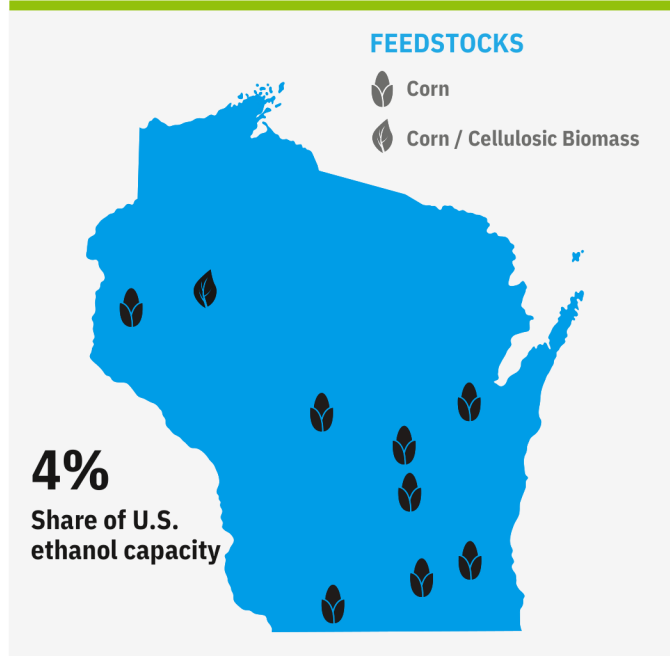


LOCATIONS



ETHANOL FACILITIES

	Congressional District	Capacity (MGY*)
1. Ace Ethanol LLC	WI-7	60
2. Aztalan Bio LLC	WI-5	110
3. Badger State Ethanol LLC	WI-2	90
4. Big River Resources Boyceville LLC	WI-3	64
5. Didion Ethanol LLC	WI-6	50
6. Fox River Valley Ethanol LLC	WI-6	65
7. Marquis Energy-Wisconsin LLC	WI-7	110
8. United Ethanol LLC	WI-1	62
9. United Wisconsin Grain Producers LLC	WI-6	60

*Million Gallons Per Year

ANNUAL PRODUCTION

670 million
Gallons of ethanol

2.10 million
Tons of distillers grains

CORN USE



32,820
Farms growing corn



545 million
Bushels of annual corn production



\$3.50 billion
Value of corn production



32%
Corn processed by ethanol plants

ECONOMIC IMPACT

\$2.60 Billion
Value of ethanol and distillers grains production

19,000 Jobs
Full-time employees supported by ethanol production

\$4.2 Billion
Ethanol's contribution to GDP

42% Reduction
in greenhouse gas emissions compared to gasoline

FUEL USE

FUEL CONSUMPTION (GALLONS)



2.60 billion
Gasoline

271 million
Ethanol

ETHANOL BLENDING BENEFITS



10.4%
Ethanol blend rate

\$672 million
Gasoline savings

1 million
Metric tons of avoided CO2 emissions

STATIONS OFFERING HIGHER BLENDS



407 E85
383 E15